



World War II Honoree



World War II Veteran



Tim Denny



BRANCH OF SERVICE
U.S. Army Air Forces

HOMETOWN
Silver Point, TN

HONORED BY
Audrey J. Denny Lambert,
Daughter



ACTIVITY DURING WWII

AIRPLANE AND ENGINE MECHANIC. SERVED AT CAMP CHAFFEE, ARKANSAS; KEESLER FIELD, MISSISSIPPI. SERVED 15 MONTHS IN THE ASIATIC-PACIFIC THEATER OF OPERATIONS WITH THE 152ND ARMY AIR FORCES BASE UNIT. SERVED PART OF THIS TIME WITH THE ARMY TRANSPORT COMMAND. APRIL 7, 1943 THROUGH MARCH 11, 1946. CORPORAL.

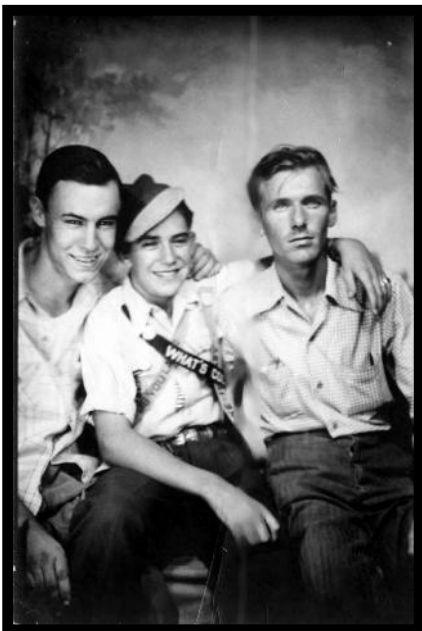
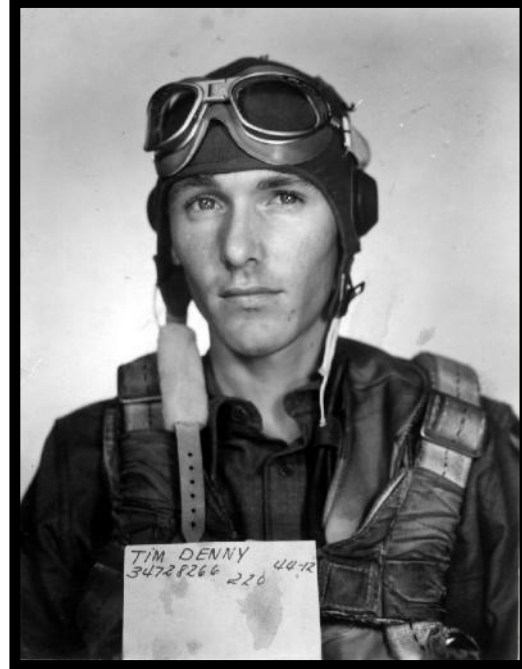
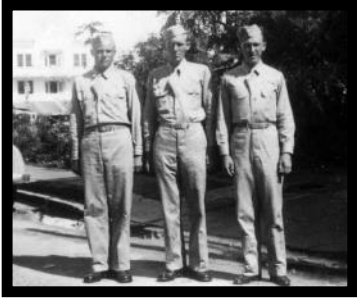
Website to Honor people who served or assisted in WWII: <http://www.wwiimemorial.com/>

The National World War II Memorial will be the first national memorial dedicated to all who served during World War II. The memorial, which will be established by the American Battle Monuments Commission, will honor all military veterans of the war, the citizens on the home front, the nation at large, and the high moral purpose and idealism that motivated the nation's call to arms. The Second World War will be the only 20th century event commemorated on the Mall's central axis.

World War II Registry

Honor members of the World War II generation by enrolling them in the World War II Registry, a list of individual Americans who participated in the war effort. To search for currently enrolled honorees, or to enroll a family member or friend. Search for Tim Denny, father of Audrey J. Denny Lambert.

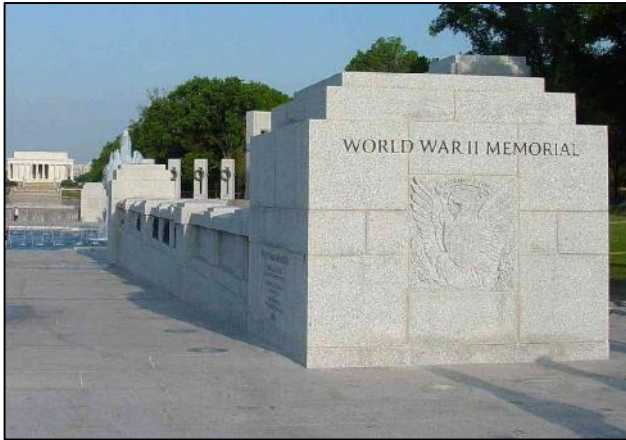
Service



Introduction:

<http://www.wwiimemorial.com/default.asp?page=registry.asp>

Authorization



President Clinton signed Public Law 103-32 on May 25, 1993, authorizing the American Battle Monuments Commission (ABMC) to establish a World War II Memorial in Washington, D.C., or its environs. It is the first national memorial dedicated to all who served during World War II and acknowledging the commitment and achievement of the entire nation.

Purpose

The memorial honors the 16 million who served in the armed forces of the U.S. during World War II, the more than 400,000 who died, and the millions who supported the war effort from home. Symbolic of the defining event of the 20th Century, the memorial is a monument to the spirit, sacrifice, and commitment of the American people to the common defense of the nation and to the broader causes of peace and freedom from tyranny throughout the world. It will inspire future generations of Americans, deepening their appreciation of what the World War II generation accomplished in securing freedom and democracy. Above all, the memorial stands as an important symbol of American national unity, a timeless reminder of the moral strength and awesome power that can flow when a free people are at once united and bonded together in a common and just cause.

Site

The first step in establishing the memorial was the selection of an appropriate site. Congress provided legislative authority for siting the memorial in the prime area of the national capital, known as Area I, which includes the National Mall. The National Park Service, the Commission of Fine Arts, and the National Capital Planning Commission approved selection of the Rainbow Pool site at the east end of the Reflecting Pool between the Lincoln Memorial and the Washington Monument. President Clinton dedicated the memorial site during a formal ceremony on Veterans Day 1995.

Design

ABMC engaged the General Services Administration's (GSA) Public Buildings Service to act as its agent to manage the memorial project. The design submitted by Friedrich St. Florian, an architect based in Providence, R.I., was selected as one of six semi-finalists in an open, national competition. Leo A Daly, an international architecture firm, assembled the winning team with St. Florian as the design architect. The team also included George E. Hartman of Hartman-Cox Architects, landscape architect Oehme van Sweden & Associates, sculptor Ray Kaskey, and stone carver and letterer Nick Benson. St. Florian's memorial design concept was approved by the Commission of Fine Arts and the National Capital Planning

Commission in the summer of 1998. The commissions approved the preliminary design in 1999, the final architectural design and several ancillary elements in 2000, granite selections in 2001, and sculpture and inscriptions in 2002 and 2003.

Fund-raising

Campaign

The memorial was funded primarily by private contributions. The fund-raising campaign was led by National Chairman Senator Bob Dole and National Co-Chairman Frederick W. Smith.

Senator Dole, a World War II veteran seriously wounded on the battlefield and twice decorated with the Bronze Star and Purple Heart, was the Republican nominee for president in 1996 and the longest-serving Republican Leader in the U.S. Senate.

Frederick W. Smith is chairman, president and chief executive officer of FedEx Corporation, a global transportation and logistics holding company. He is a graduate of Yale and a former U.S. Marine Corps officer, and serves on the boards of various transport, industry and civic organizations.

The memorial received more than \$197 million in cash and pledges. This total includes \$16 million provided by the federal government.

Timeline

Construction began in September 2001. The memorial opened to the public on April 29, 2004, and was dedicated on Saturday, May 29, 2004. The memorial became part of the National Park System on Nov. 1, 2004, when it was transferred from the American Battle Monuments Commission to the National Park Service, which now operates and maintains the memorial.

ABMC

The American Battle Monuments Commission is an independent, executive branch agency with 11 commissioners and a secretary appointed by the president. The ABMC administers, operates and maintains 24 permanent U.S. military cemeteries and 25 memorial structures in 15 countries around the world. The commission is also responsible for the establishment of other memorials in the U.S. as directed by Congress.

Nearly 59 years after the end of World War II, the National World War II Memorial was dedicated in Washington, D.C., on Saturday, May 29, 2004.

The dedication of the memorial was the culmination of an 11-year effort that started when the memorial was authorized by Congress on May 25, 1993. Construction began September 4, 2001, after several years of fund raising and public hearings. The memorial opened to the public on April 29, 2004. The dedication celebration spanned four days and included a WWII-themed reunion exhibition on the National Mall staged in partnership with the Smithsonian Institution's Center for Folklife and Cultural Heritage, a service of celebration and thanksgiving at the Washington National Cathedral, and an entertainment salute to WWII veterans from military performing units.

<http://www.ajlambert.com>