

J. B. LEFTWICH, BAXTER SEMINARY 1937

Source: All Roads Lead to Baxter
A Story of Baxter Seminary, Baxter, TN
By Anita Cunningham Mitchum: 2005: UMC Class of 1951
Anita C. Mitchum
302 High Crest Road
Signal Mountain, TN 37377
Pg. 256:

INTERVIEWS:

J. B. Leftwich, Baxter Seminary 1937.

I was only thirteen years old when I came to the Seminary. I came by bus from Buffalo Valley. I discovered that the school was an encourager with the faculty exposing me to worlds of information. They knew how to tap the student's resources and how to influence us in our studies.

Mrs. Upperman was my favorite teacher. She knew I was a child, but she treated me like a peer. I entered the speech program, and stumbled quite a bit, but she still continued to support me.

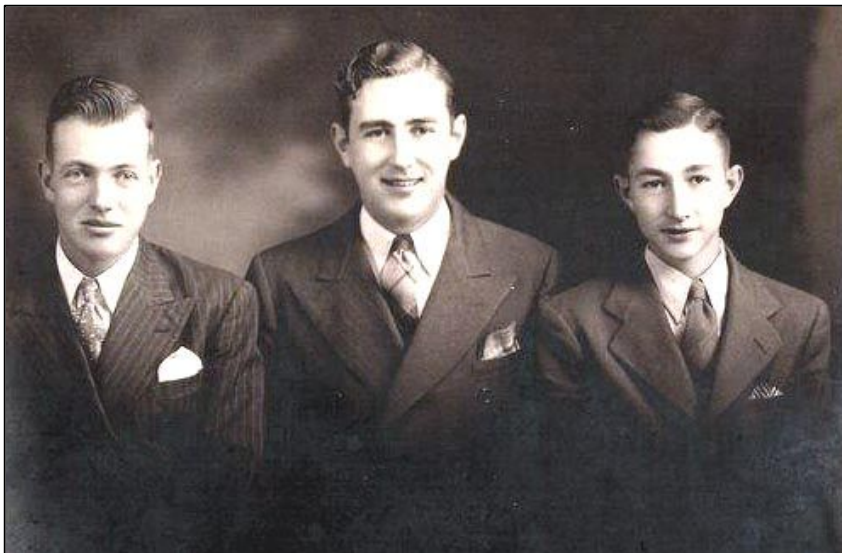
When I was a Senior, I found out that Ruth Grace was playing the lead in our play. I tried out for the male lead, hoping to follow the script where it said "Boy kisses Girl!"

There were fifty-one graduates in 1937. I was very thrilled to be elected as President of the class; it was a coveted position. A brilliant boy, J. C. Sadler from Silver Point, was almost elected, but he declined and nominated me instead! I found out later that he didn't want to make the President's speech at Arbor Day, when we seniors donated a tree and planted it on the campus! He thought I could make a better speech.

Some of my friends were Charles Nunally, J. T. Jred, James Elrod, Joe Alcorn, Andrew Alexander, Eugene Boyd, Hilda Nichols, and Ruby Carr. As I walked to the bus stop in Buffalo Valley, I recited the classmates' names in alphabetical order. This recitation is still firmly planted in my memory!

Even though we students parted in 1937, a close bond is still felt. Some of us continue to stay in touch; and even when we can't see each other in person, the bond is not broken. There is still a strong feeling there.

(J. B. Leftwich taught at Castle Heights Military Academy, Lebanon, TN, for 38 years. He met his wife, Jo Doris, at Cumberland Law School. He was a Nashville Tennessean field reporter for many years. His essays appear in the chapter "All the Yesterdays."



Leftwich Brothers

L to R: Lillard Leftwich, J. B. Leftwich
and Thomas Clifford Leftwich

Picture taken ca. 1941.

Courtesy of J. B. Leftwich

Source: 1860 Census, 11th Civil Dist., Putnam Co., TN

Dwl: 1292 Family: 1292 Line: 22

Leftwich, L. T. 37 M (value of real estate, 800) (value of personal estate, 556) VA
(*Lewis Temple Leftwich*)

Leftwich, Elizabeth 35 F TN (*Mary Elizabeth Cross md Lewis Temple Leftwich*).

Leftwich, William T. 14 M TN

Leftwich, Snoden M. 13 M TN

Leftwich, Mary L. 12 F TN

Leftwich, Samuel E. 10 M TN

Leftwich, Lewis J. 8 M TN

Leftwich, Martha L. 6 TN

Leftwich, Ann F. 5 F TN

Leftwich, Joel A. 3 TN

Leftwich, Virginia E. 11/12 F TN

Source: 1870 Census, 11th Civil Dist., Putnam Co., TN

Dwl: 35 Family: 35

Leftwich, L. T. 48 M W Farmer (value of real estate, 1500) (value of personal estate, 1140) VA
(*Lewis Temple Leftwich Sr md Mary Elizabeth Cross*).

Leftwich, William T. 23 M W Farmer (value of personal estate, 200) TN

Leftwich, Mary L. 21 F W Keeps House TN

Leftwich, Samuel 20 M W TN (*Samuel Leftwich md Catharin*)

Leftwich, Elizabeth 18 F W TN

Leftwich, Ann T. 16 F W TN

Leftwich, Joel A. 14 M W TN

Leftwich, Jasper 17 M W TN

Leftwich, Virginia 12 F W TN

Leftwich, George 10 M W TN (*George Madison Leftwich md Anna "Annie" Haggard*).

Source: 1880 Census, 11th Civil Dist., Putnam Co., TN

Dwl: 39 Family: 44

Leftwich, Lewis T. Sr. M W 56 Widow Farmer VA VA VA

Leftwich, Jasper M W Son 27 Single Works Farm TN VA TN

Leftwich, Martha E. F W Dau. 25 Single Keeps House TN VA TN

Leftwich, George M W Son 18 Single Works Farm TN VA TN

(*George Madison Leftwich md Anna "Annie" Haggard*)

Source: 1880 Census, 11th Civil Dist., Putnam Co., TN

Dwl: 40 Family: 45

Leftwich, Samuel Head M W 30 Married Farmer TN VA TN

Leftwich, Catharin Wife F W 30 Married Keeps House TN TN TN

Leftwich, Lewis M. Son M W 4 Single TN TN TN

Garner, Nancy Servant F W 10 Single Servant TN TN TN

Source: 1900 Census, 11th Civil Dist., Putnam Co., TN

Dwl: 13 Family: 13

Leftwich, George Head M W January 1861 39 Married (13 yrs. married)

Farmer TN TN TN (*s/o Lewis Temple Leftwich Sr. & Mary Elizabeth Cross*).

Leftwich, Ana Wife F W September 1870 29 Married (13 yrs. married) (6 children born,
6 children living) TN TN TN (*md 10 March 1887, Annie Haggard*).

Leftwich, Virginia L. Dau. F W December 1887 12 Single At School TN TN TN

Leftwich, Mary A. Dau F W December 1889 10 Single At School TN TN TN

Leftwich, Lonis Son M W March 1892 8 Single TN TN TN

Leftwich, Etter E. Dau. F W September 1894 5 Single TN TN TN

Leftwich, J. M. Son M W February 1897 3 Single TN TN TN (*J. B. Madison Leftwich*)

Leftwich, Martha E. Dau F W August 1899 9/12 Single TN TN TN

Source: 1910 Census, 11th Civil Dist., Putnam Co., TN

Dwl: 3 Family: 3

Leftwich, Annie F. Head F W 39 Widow (11 children born, 9 children living) Farmer TN TN TN
(*nee Haggard, w/o George Madison Leftwich*).

Leftwich, Mary Dau F W 20 Single TN TN TN

Leftwich, Louis C. Son M W 18 Single Student TN TN TN

Leftwich, Etta Dau F W 14 Single Student TN TN TN

Leftwich, Joe Son M W 13 Single Labor TN TN TN

Leftwich, Martha E. Dau. F W 9 Single TN TN TN (*Martha Ellen Leftwich*).

Leftwich, Sam Son M W 7 Single TN TN TN

Leftwich, Dallas C. Son M W 5 Single TN TN TN

(*Dallas C. Leftwich md 24 December 1933, Minnie Lee White, d/o Jason White & Vint Watts.*).

Source: 1910 Census, 11th Civil Dist., Putnam Co., TN

Dwl: 127 Family: 127

Bates, Joshua B. Head M W 38 Married (12 yrs. married) Farmer General Farm TN TN TN
(*Joseph Bartlett Bates*)

Bates, Maud Wife F W 34 Married (12 yrs. married) (1 child born, 1 child living) TN TN TN
(*Maud Fitzpatrick*).

Bates, Lela Dau. F W 11 Single TN TN TN (*Lela Bates md Lewis Casto/Cass Leftwich*).

Source: 1920 Census, 11th Civil Dist., Putnam Co., TN

Dwl: 18 Family: 18 Line: 86

Leftwich, Samuel Head M W 69 Married Farmer TN VA GA (*looks like GA*).

Leftwich, Catharin Wife F W 70 Married TN TN TN

Source: 1920 Census, 11th Civil Dist., Putnam Co., TN

Dwl: 20 Family: 20 Line: 93

Leftwich, Anna F. Head F W 49 Widow Farmer General Farm TN TN TN
(*nee Haggard, w/o George Madison Leftwich*).

Leftwich, Joe M. Son M W 23 Single Laborer Farm TN TN TN

Leftwich, Martha Ellen Dau. 20 Single TN TN TN

Source: 1920 Census, 11th Civil Dist., Putnam Co., TN

Dwl: 118 Family: 119 Line: 14

Leftwich, Casto Head M W 26 Married Farmer General Farm TN TN TN
(*Lewis Casto/Cass Leftwich, s/o George Leftwich & Annie F. Haggard*).

Leftwich, Lela Wife F W 21 Married TN TN TN

Leftwich, J. B. Madison Son Single M W 1/12 TN TN TN

(*J. B. Madison "Joe" Leftwich. His initials J. B. stand for Joseph Bartlett, named after his grandfather, Joseph Bartlett Bates. The name Madison originates from J. B. Leftwich's grandfather, George Madison Leftwich*).

My name is J B Madison Leftwich, named for my two grandfathers, Joshua Bartlett Bates and George Madison Leftwich. J. B. Leftwich.

Source: 1930 Census, 11th Civil Dist., Putnam Co., TN

Dwl: 97 Family: 97 Line: 84

Leftwich, Cass Head M W 38 Married (27 yrs. old 1st marriage) Farmer General Farm TN TN TN
(*Lewis Cass Leftwich, s/o George Leftwich & Annie F. Haggard*).

Leftwich, Lela Wife F W 30 Married (19 yrs. old 1st marriage) TN TN TN
(*nee Bates, d/o Joseph Bartlett Bates & Maud Fitzpatrick*).

Leftwich, J. B. Son M W 10 Single TN TN TN

(J. B. Madison "Joe" Leftwich. His initials J. B. stand for Joseph Bartlett, named after his grandfather, Joseph Bartlett Bates. The name Madison originates from J. B. Leftwich's grandfather, George Madison Leftwich).

Leftwich, Lillard M W 6 Single TN TN TN

Leftwich, Clifford M W 2 7/12 Single AR TN TN

Source: 1930 Census, 11th Civil Dist., Putnam Co., TN

Dwl: 98 Family: 98 Line: 89

Bates, J. B. Head M W 58 Married (26 yrs. old 1st marriage) Farmer General Farm TN TN TN

(Joseph Bartlett Bates, f/o Lela Bates Leftwich)

Bates, Maud Wife F W 51 Married (19 yrs. old 1st marriage) TN TN TN

(nee Fitzpatrick, m/o Lela Bates who md Lewis Cass Leftwich).

Medley, Blackstone Servant M W 56 Single TN TN TN

Source: 1930 Census, 11th Civil Dist., Putnam Co., TN

Dwl: 102 Family: 103 Line: 36

Leftwich, A. F. Head F W 59 Widow Farmer General Farm KY TN TN

(nee Haggard, w/o George Madison Leftwich).

Leftwich, Etta Dau. F W 35 Single TN TN TN

Leftwich, Sam Son M W 27 Single Laborer Odd Jobs TN TN TN

Leftwich, Dallas Son M W 25 Single Teacher Public School TN TN TN

(Dallas C. Leftwich md 24 December 1933, Minnie Lee White, d/o Jason White & Vint Watts.).

Source: Putnam County Tennessee Cemeteries by Maurine Ensor Patton:

Pg: 370

Odd Fellows Cemetery, Baxter, Putnam Co., TN

Leftwich, Lela Bates – b. 17 November 1898, TN – d. 7 August 1970

(Lela Bates, d/o Joshua Bartlett Bates & Maud Fitzpatrick. She md Lewis Castro/Cass Leftwich)

Leftwich, Lewis Cass – b. 11 March 1892, TN – d. 28 October 1961

(Lewis Cass Leftwich, s/o George Leftwich & Annie F. Haggard).

Bates, Joshua Bartlett – b. 18 November 1871, TN – d. 17 November 1952

(Joshua Bartlett Bates, f/o Lela Bates Leftwich).

Bates, Maud Fitzpatrick – b. 12 August 1878, TN – d. 25 July 1959

(Maud Fitzpatrick md Joshua Bartlett Bates. Parents of Lela Bates Leftwich).

Source: Putnam County Tennessee Cemeteries by Maurine Ensor Patton:

Pg: 486

Smellage Cemetery, Boma, Putnam Co., TN

Leftwich, George Madison – b. 20 January 1861, TN – d. 26 May 1906, Putnam Co., TN

(George Madison Leftwich, s/o Lewis Temple Leftwich Sr. & Mary Elizabeth Cross).

Leftwich, Annie Francis – b. 12 September 1870, TN – d. 1 March 1933

(nee Haggard, w/o George Madison Leftwich. Annie Francis Haggard,

d/o John Nelson Haggard & Mary Elizabeth Crowell)

Leftwich, Virginia E. – b. 10 December 1887, TN – d. 21 February 1905

(d/o George Madison Leftwich & Ana "Annie" F. Haggard).

Leftwich, Martha Ellen – b. 5 August 1899, Putnam Co., TN – d. 19 November 1959, Putnam Co., TN -

(d/o George Madison Leftwich & Ana "Annie" F. Haggard).

Leftwich, Lewis – b. 25 November 1851, TN – d. 19 December 1912

(Lewis Temple Leftwich Sr. md Mary Elizabeth Cross. Parents of George Madison Leftwich who md Ana "Annie" F. Haggard).

Source: Putnam County Tennessee Cemeteries by Maurine Ensor Patton:

Pg: 164

Cookeville City Cemetery, Cookeville, TN

Leftwich, Dallas C. – b. 26 July 1904, TN – d. 6 April 1987

(Dallas C. Leftwich, s/o George Madison Leftwich & Annie F. Haggard).

Leftwich, Minnie Lee – b. 28 September 1912
(Dallas C. Leftwich md 24 December 1933, Minnie Lee White, d/o Jason White & Vint Watts.).

LILLARD LEFTWICH

Born: September 25, 1923, Buffalo Valley, TN
Died: December 6, 1985, Lebanon, TN
Buried: Leftwich Cemetery, Gentry, TN
Attended Baxter Seminary, Putnam Co., TN, only one semester.

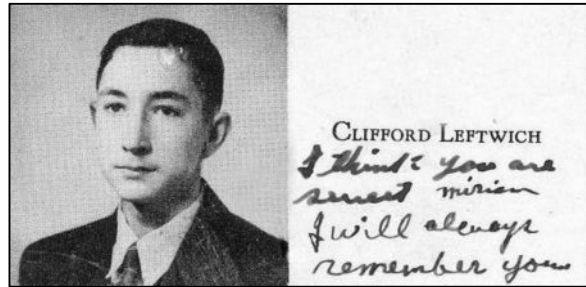
THOMAS CLIFFORD LEFTWICH

Born: August 17, 1927, Ash Flat, Ark.
Died: February 13, 1979, Logansport, IN
Buried: Logansport, IN.
Attended Baxter Seminary, Putnam Co., TN

<http://www.ajlambert.com>



1944 Highland yearbook Baxter Seminary
Thomas Clifford Leftwich – Senior



Thomas Clifford “Cliff” Leftwich attended Baxter Seminary, Baxter, Putnam Co., TN.

1943 Highlander yearbook, Baxter Seminary
Thomas Clifford Leftwich – Junior

Minnie Lee (White) Leftwich Obt.

COOKEVILLE – Funeral services for Minnie Lee Leftwich, 90, of Cookeville will be held at 1 p.m. on Wednesday, January 8, from the chapel of Dyer Funeral Home. Burial will be in Cookeville City Cemetery.

The family will receive friends from 6-9 p.m. today, Tuesday, January 7, and from 1 a.m. until time of services on Wednesday at the funeral home.

Mrs. Leftwich died on Sunday, January 5, 2003, at Cookeville Regional Medical Center.

She was born on September 28, 1912, in Putnam County to the late Jason and Vint Watts White.

Mrs. Leftwich was a homemaker and a member of Stevens Street Baptist Church.

Her family includes two sons and daughters-in-law, Gary and Geraldine Leftwich and Mickey and Vivian Leftwich, all of Cookeville; a brother, James Harvey White of Cookeville; six grandchildren, Stewart and Lanny Leftwich Jr., Lisa Jones, Vicki Morris, Melodie McDonald and Kimberly Lyles; and 15 great-grandchildren.

In addition to her parents, she was preceded in death by her husband, Dallas Leftwich; five brothers, Hubert, Dewey, Edsel, Odel and Henry; and three sisters, Cora Mae Woodard, Sara T. Dillard and Ella B. Sullians.

Pallbearers will be family and friends.

Memorial donations may be made to Tennessee Baptist Children's Home.

Bro. Carl Scarlett will officiate at the services.

The following tribute was taken from the 1987 Alumni Directory and was written by Col. J B Leftwich, whom I had the honor of knowing during my four years in Lebanon. Castle Heights was more to Col. Leftwich than just a teaching job, it was a love and a way of life. It is to men such as him that we owe so much and will forever remember.

CASTLE HEIGHTS HISTORY

<http://www.castleheights.com/chma/taps.htm>

Taps for Castle Heights came on an August afternoon in the summer of 1986 just as the proud old military academy prepared for its 85th school year. And she died with her head high as if she expected reveille to sound as usual the next day. But reveille did not sound the next day despite efforts of Lebanon business and professional people to pump life into her once again. Castle Heights was a tough old institution which had weathered other crises and had fought back to full strength. Indeed, only twelve years before, in 1974, the Castle Heights Foundation was formed to buy from the floundering Bernarr Macfadden Foundation the school and its more than one hundred acres of land.

In the final analysis, Castle Heights died because there was no longer a body of cadets large enough to sustain her. Year after year following the Vietnam War, which changed so many attitudes and altered so many institutions, school officials hoped and prayed for a halt in the declining enrollment; indeed, for any kind of an upward trend. But aside from an occasional flurry, increases in enrollment did not come. And so, Castle Heights ran its course, and the time came for taps the final taps. There had been many casualties among the ranks of military schools prior to the demise of Castle Heights. There will be many more. Education in this country is on a different track, and the future of military schools at the secondary level is, at best, hazy. Several factors are responsible for a weak response at the market place, including escalating tuition, the proliferation of private day schools, and the reluctance of teenagers to leave home to attend boarding school. Another factor, perhaps as important as the above mentioned ones, focuses on home discipline in which children make the decisions, especially in the matter of being away from home and friends to attend school.

Add to these factors the tremendous overhead of operating a boarding school. Salaries, utilities, maintenance of ancient buildings, transportation, food and administration become more costly with each passing year.

And so, the heyday of boarding schools in general and military schools in particular is long over, and this is sad. These schools have meant so much to so many. The stronger, richly endowed boarding schools will survive, but maintaining enrollment numbers will become increasingly difficult, even for them.

It is not easy to write the obituary of one you love. On a personal note, I have been a part of Castle Heights Military Academy as teacher, administrator, or trustee for forty-five years.... and I loved her. But the time had come for her to go, because she could be only a

shadow of what she was. I am not precluding the possibility of another school operating on the Castle Heights campus; that is a faint possibility. I am saying the Castle Heights I knew and loved and supported is gone. I am writing her obituary, it is necessary to mention important events. Here are some of them.

1902 - Castle Heights School founded by L. W. P. Buchanan with the support of David E. Mitchell. Main was the only building and enrollment was 96 boarding students.

1903 - Dr. L. L. Rice and Prof. O. N. Smith, two of the giants in the early years, came aboard.

1913 - Rice became sole owner.

1917 - The school was renamed Castle Heights Military Academy.

1921 - Rice sold the school to a group of faculty members.

1928 - Bernarr Macfadden bought the school, and soon thereafter hired Harry L. Armstrong, for many years superintendent.

1936 - The Mitchell House was bought. The Mitchell property brought the school acreage to 225.

1941 - The Junior College was established with R. C. Ford as dean.

1973 - Five girls were admitted, the first females since this beginning of World War I to attend Castle Heights.

1974 - The Castle Heights Foundation was formed with Roy Wauford as chairman of its board. The new foundation bought the school from the Macfadden Foundation.

1986 - Castle Heights closed its doors.

J. B. Leftwich

Memories of Heights
by Jim Welty

How great it felt, to come back "home",
To Castle Heights again.
To walk the grounds, to feel the breeze,
And be where we had been.
And best of all, to see again,
Those old familiar faces.
Bringing back old memories of
Old friends, old times, old places
How many times, as years went by,
My mind slipped back to Heights.
Conjuring up old memories,
Of long past days and nights.
Those memories of long ago,
And all the times we had.
Those memories that haunt us all,
The good ones, and the bad.
Those memories of S.M.I.,
And Sunday Dress Parade.
Of Col. Ingram, Maj. Mann,

I doubt they'll ever fade.
The formations at the circle,
Marching thru the mess hall door,
Now the circle, and the mess hall,
And old Bullard are no more.
And the band no longer plays retreat,
And the bugle does not sound.
And the auditorium's empty,
And there's silence all around.
But don't let the silence fool you,
Heights is not dead and gone.
We know that in our hearts and minds,
It always will live on.
It will live in all our memories,
Recollections of those sights.
That will stay with us forever,
God Bless you, Castle Heights.

Mr. Leftwich

<http://www.press-herald.com/cameos/2004/0414cameos.html>

Archived Cameos of Minden:

People, Places and Events: 2004

JB Leftwich, whom I had the honor of knowing during my four years in Lebanon. Castle Heights was more to Col. Leftwich than just a teaching job.

Mr. J. B. Leftwich was such a kind gentlemen. He taught Chemistry, Biology and other sciences. I was in the Biology class that he tried an innovative approach to teaching.

Now if you took the left hall instead of going into the auditorium, Miss Ruby Craton and Mr. J. B. Leftwich had their class rooms on that end of the first floor. Miss Craton made History just about my favorite subject. She was such a sweet person, always with a smile on her face, and such an excellent teacher. Mr. J. B. Leftwich was far ahead of his time in teaching methods when he put into practice the lessons we learned in Biology.

We studied from the text book, but we put into practice some of the things he taught. He took us to a tree on the back of our campus. This tree had a large rotten area and would eventually either blow down or be cut down. He had us scrape and cut out all the rotten parts.

After he was assured all the rot was gone we mixed something like cement or Plaster of Paris and filled the cavity we had created. The tree was saved for many years.

His teachings have remained in my memories. Do you remember him?

Our teachers tried every way possible to make learning easy and fun.

What I would wish for our children today is that they might live in the same Minden that we grew up in, and that their teachers would be the same kind of dedicated educators we had. Is that too much to wish for?

<http://www.ajlambert.com>