

BRADFORD FAMILY

CLIFFORD LEW BRADFORD (#958)

Source: Heritage of Putnam County Tennessee – 2008 by Putnam County Heritage Book Committee and County Heritage Inc.

Pg. 336– Clifford Lew Bradford was stationed in the South Pacific, the Philippines, for the duration of his service in World War II.

Clifford was on a ship headed for Japan, his last assignment. Before the ship arrived in Japan, the atomic bomb was dropped on that country, and Japan surrendered. He received the Japan Clasp for his assignment, even though his ship didn't reach Japan. Other medals Clifford received for his service are: Occupation Medal, Good Conduct Medal, Victory Medal with six stars representing three battles, the Japan Clasp, and the Philippine Liberation Medal and Ribbon.

Story submitted by: Ann Bradford Ramsey, 309 Rickman-Monterey Hwy., Rickman, TN, daughter of Clifford L. Bradford.

CLIFFORD LEW BRADFORD (#959)

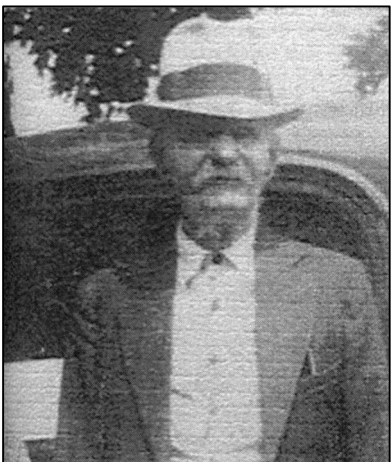


Source: Heritage of Putnam County Tennessee – 2008 by Putnam County Heritage Book Committee and County Heritage Inc.

Pgs. 336 & 337 – Clifford Lew Bradford, son of Thomas Taylor Bradford and Eliza Jane Sherrell, was born 30 Jan. 1907 in Putnam Co., TN and died 10 Mar. 1998 in Murfreesboro, Rutherford Co., TN. He married Della Randy Dunn on 7 May 1932. He was drafted into the United States Army in 1943, leaving a wife and three young children at home. He was stationed in the South Pacific, the Philippines, for the duration of his service.

After the war, Clifford did farm work and attended the GI Training School. He and Della had two more children.

Story submitted by: Glenn T. Bradford, son of Clifford L. Bradford.



THOMAS TAYLOR BRADFORD CIVIL WAR SOLDIER (#960)

Thomas Taylor Bradford was born about 1848 in Jackson County, TN, new Putnam County, the son of Thomas Jerry Bradford and Rebecca Kinnard.

Toward the end of the Civil War, Thomas was fifteen or sixteen years old. The Confederate Army was drafting boys as young as fourteen. Thomas could have been drafted into the southern ranks. However, his brother, Jack Bradford, a Union soldier, took Thomas to Carthage, TN, where he enlisted as a private in the Union Army, Thomas served in his brother's regiment from the summer of 1864 until the war ended.

Story submitted by: Ann Bradford Ramsey, 309 Rickman-Monterey Hwy., Rickman, TN, granddaughter of Thomas Taylor Bradford; research by: Carol Hall Bradford.



WHITLEY THOMAS “W.T.” BRADFORD (#961)

Source: Heritage of Putnam County Tennessee – 2008 by Putnam County Heritage Book Committee and County Heritage Inc.

Pg. 337 - Whitley Thomas Bradford, Jr., known as W. T. all through school, was born December 14, 1925 in Putnam County. He enlisted in the Army on August 4, 1944 and was honorably discharged on December 28, 1946 at Ft. George G. Mead, Maryland. He was a staff sergeant in Company G, Infantry; his military occupational specialty was Investigator 301. His military qualification was the Combat Infantryman Badge SS M-1 Rifle. He was wounded on January 31, 1945 in Germany. He received the Good Conduct Medal, Purple Heart, Army Occupation Medal (Germany), European-African-Middle Eastern Theater Ribbon, and World War II Victory Ribbon Lapel

Button. W. T. lived in Denver, CO at the time of his death.

Story submitted by: Glenn T. Bradford, Heritage Book Committee, first cousin to W. T. Bradford.

GLENN TAYLOR BRADFORD (#633)

Source: Heritage of Putnam County Tennessee – 2008 by Putnam County Heritage Book Committee and County Heritage Inc.

Pg. 237 – Glenn Taylor Bradford was born March 19, 1948 to Clifford and Della Dunn Bradford and delivered by the community mid-wife, Mrs. Annie Clouse. He was named for his grandfather, Thomas Taylor Bradford. He has three older siblings: C. D., Ann, and Cleamon. His education was at Nash’s Chapel School and Upperman High School. After school, Glenn worked at various jobs, but he trained in the furniture and upholstery industry. He married Helen Ingram and had twins, Randy Taylor and Brandy Nicole, born July 14, 1984. Glenn and Helen divorced in 1992. Glenn married Carol Littrell Hall on September 2, 2002 in Baxter, TN. They went to Upperman High School together in the early ‘60’s. Carol taught school for 31 ½ years. 30 ½ of them at Baxter Elementary School. She retired in January 2003 and completed her Boyd Family Book, a genealogy of her Boyd ancestors, a book she had been working on for 15 years. Carol and Glenn now have a thrift store at Double Springs Crossroads. They are always looking for bargains, new or used, and do some traveling looking for goodies. They are avid genealogists and will talk about family history with anyone anytime.

Story submitted by: Chris Hall, son of Carol Hall Bradford.

<http://www.ajlambert.com>



Glenn Taylor Bradford and his wife Janice Carol (Littrell) Hall Bradford. Glenn Taylor Bradford, s/o Clifford Lew Bradford & Della Randy Dunn. Clifford Lew Bradford, s/o Thomas Taylor Bradford & Eliza Jane Sherrell.

Janice Carol Littrell was born Oct. 9, 1947 in Cookeville, Putnam Co., TN, d/o Clara Jean Boyd & Dumas Clay Littrell (1922-1984), s/o William Littrell & Nola York. Janice Carol Littrell married 1st on the 30th Mar. 1968, Baxter, TN, Henry Hall (1939-2001), s/o Arthur Hall & Lois Green. She married 2nd on the 5th Sept. 2002, Baxter, TN to Glenn Taylor Bradford, b. 19 March 1948.

Janice Carol Bradford compiled and published a book called *The Boyd family History – The Descendants of John Boyd and Mary Elizabeth Leath – from Anderson County to Putnam Co., TN*. Carol worked on the Upper Cumberland Researcher board and was on the Heritage Book Committee along with her husband Glenn Taylor Bradford.

They are a very nice couple and do many wonderful things to preserve the heritage of their families and the families of Putnam Co., TN and surrounding areas. Picture taken in October 2007 at the Buffalo Valley Community Center, Putnam Co., TN.

<http://www.ajlambert.com>