

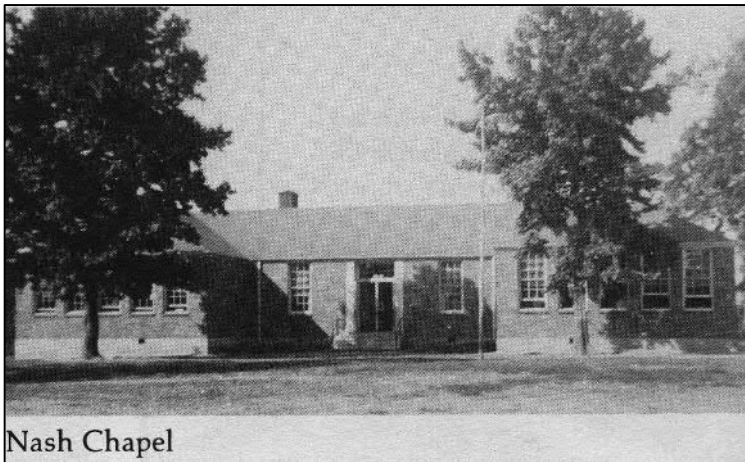
## NASH'S CHAPEL SCHOOL GETS SIGNS TO MARK HISTORIC LOCATION

Herald-Citizen, Cookeville, TN: 30 May 2015

By Megan Trotter

'Forgotten Crossroads'

**PUTNAM COUNTY** — In their search for “almost forgotten crossroads ” of Putnam County, the Putnam County Archives has been collecting information from local residents about Nash’s Chapel School.



Nash Chapel

Nash’s Chapel School was located at the intersection of Austin Bottom Rd. and Cookeville Boat Dock Rd, which was formerly the Smithville Rd. before Center Hill Lake was built and flooded the area and made a dead end road. It was located across the road from the Nash Grove Baptist Church.

Before the school came into existence, local students went to Pleasant View School, the first school in the area. According to the late Lela Belle Nash, a former teacher, this school was located where Clarence Herd lived in the 1950s, which is one mile from Nash’s Chapel.

Linda Nash said that her father, Matthew Hedgecough, and her uncle, Mark Hedgecough, attended the Pleasant View School. Nettie Bradford Hawkins also told her nephew, Glenn Bradford, that she attended the Pleasant View School in her early school years.

According to Verble and Dorothy Nash, the Nash’s Chapel School was built on land donated to Putnam County by James Riley (J.R.) and Cordelia Mott Nash on April 12, 1925. Verble is the grandson of J. R. and Cordelia Nash. In addition to donating the land for the school, J.R. cut the timber used to build the wood framed school house.

About 1940, a brick building was erected as part of the Federal Works Progress Administration program. It was a four-teacher school, with a lunchroom. Oscar Myatt drove a covered wagon and transported children that lived a long distance from school.

“Vicky Henley, daughter of Kenneth Henley, remembers her dad talking about an incident that happened in 1945 when he was in school,” Glenn Jones, Putnam County archivist, said. “His teacher, Mrs. Elise Green, cut her finger on a paper; when she saw the blood, she passed out. Kenneth picked her up and put her on her desk. He then put water on her face, and she came to.”

Judy Nash Stover said the school closed at the end of her 7th grade year, May 1970. Dorothy Nash added that the school building burned in 1976, and her family leased the

land from the Board of Education. Later the Board deeded the land to Putnam County. In 1997 the county deeded the land to Nash Grove Baptist Church, located across the road.



(Pictured: Celebrating installation of the sign for Nash's Chapel School are, from left, Debbie Holmes; Carol Bradford; Carolyn Rice; Verble Nash; Dorothy Nash; Randy Porter, county executive; and Glenn Jones, Putnam County Archivist. Photo by Ty

Kernea).

Former students and their spouses, Bob and Carolyn Rice and the late Glenn Bradford and wife, Carol, donated funds to purchase the signs that now mark Nash's Chapel School. The next "forgotten community" area featured will be Boiling Springs School. Anyone who attended Boiling Springs School or lives in the area and would like to be in the picture is invited to meet at the old school site on Wednesday, June 3, at 2:30 p.m.

If anyone has further information on this school or any other school that was in the county, call the Archives 520-0042, or come by at 121B South Dixie Ave.

### **THE "BLOODY EIGHTH"**

Siftings from Putnam County Tennessee by Mary Hopson, pgs. 4 & 5.

The Eighth District is a very large district which includes several communities; Boiling Springs, Twin Oak, Thomas, Nash Chapel and Ozion Community, and a small community, Davis, which had a one teacher school. After the Center Hill Dam came in and water backed up one had to cross Caney Fork River, where the Cookeville Boat Dock is now or go around by Burgess Falls in White County to get there.

In later years the schools were consolidated and the children were bussed to the nearest schools, Baxter and Cookeville. We didn't have electricity until TVA came in the 40's. We studied by lamplight, cooked our food on wood stoves, and got our water from springs and wells.

**Nash Chapel School** was first located down toward Cookeville Boat Dock. Known at that time as Pleasant View, a one teacher school. When Clearance Heard's home is now.

J. R. Nash furnished the land to cut the lumber for the framed schoolhouse which was called Nash Chapel School until the year\_\_\_\_? When the brick building was erected at one time it was a five teacher school. There were no buses. Oscar Myatt drove a covered wagon and transported the children that lived a long distance from school.

\*See more 'Forgotten Crossroads' and read the full story of the "The Bloody Eighth" and  
\*See the Nash's Chapel School Reunion photo (Schoolyard Tales) at:  
<http://www.ajlambert.com>