

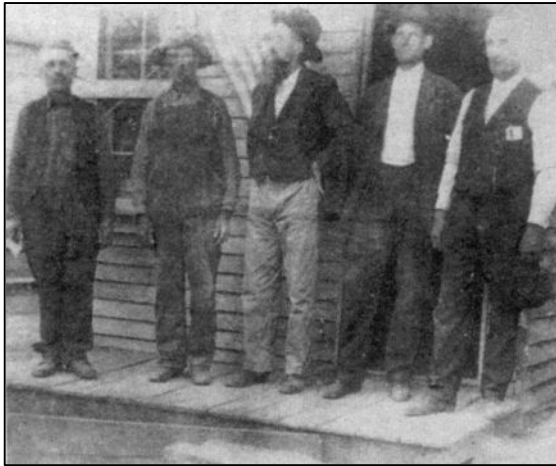
BOMA COMMUNITY (#25)

Source: Heritage of Putnam County Tennessee – 2008 by Putnam County Heritage Book Committee and County Heritage Inc.

Pg. 8 – The Boma Community lies in southwest Putnam County on Old Baxter Road between Baxter and Roberts Switch. It became a named community with the establishment of a U. S. Post Office. The Post Master, Franklin Pierce Fisher, submitted the names of two of his daughters to the U. S. Post Office. One daughter was named Bomar. The Postal Service dropped the “r” from Bomar and named the Post Office “Boma”.

The accompanying photo shows the Boma Post Office. The gentlemen in the picture, from left to right, are Franklin Pierce Fisher, Jasper Lowe, Jacob M. Stewart, Joseph Calvin Stewart, and John Barks. Fisher and Jacob Stewart were both, at different times, Post Masters. Jacob was also one of the founders and first pastor at the New Home Baptist Church in Boma. Barks operated a general store, Lowe was known as the “sheriff”. Joseph Stewart is the son of Jacob.

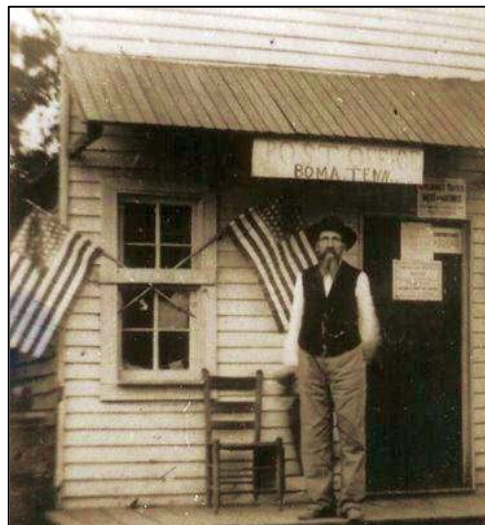
The railroad came through Boma in the 1890s and established a stop. Although Boma had passenger service, a depot was never built. The railroad ticket station was in various general stores. The heyday of the railroad declined and passenger service was discontinued in 1955.



Several general stores operated in Boma over the years. Some of the proprietors were John Barks, Ruth Barks, Earl Lowe, Wade Butler, Newt Taylor, William G. Anderson, L. M. Anderson, Will Cooper, Joe Side Shanks, Dicy Hancock, Julius Jared and Lemuel Spears. L. M. Anderson sold the first ice cream cones in Boma – 5 cents for a single scoop and 10 cents for a double. The Post Office and railroad ticket office were also located in his store for some period. Frances Malbell “Toad” Brown cut hair with hand

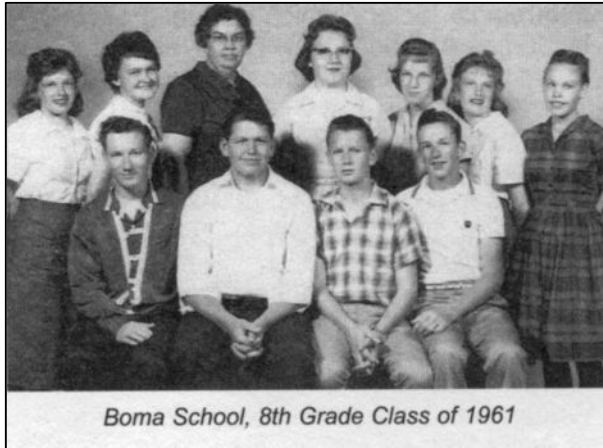
clippers in one of the stores for 10 cents. Toad’s son, Larry Hugh Brown, remembers that on one day, he gave 40 haircuts.

The Georgia-Tennessee Phosphate Company operated some phosphate mines about a half-mile south of Boma for a few years. Years of operation were probably between 1900 and 1910. Some say the operation was active before 1900, but no evidence exists in the 1900 census that anyone was engaged in mining activity at that time. It is told that some of the miners were brought in from out of town and lived in railroad cars that were parked on the Boma railroad siding. The phosphate was hauled from the mining operation to Boma on narrow-gage railroad cars pulled by mules.



(Picture: Jacob Mattison Stewart, standing on the porch of the Boma, post office).

Boma has two churches, the New Home Baptist Church, established in 1898, and the Boma First Church of God.



There was a K-8 school located at Boma for many years. The accompanying picture is the 8th grade class of 1960-61. Pictured, back row left to right, are Mary Lou Herren, Sandra Harris, Miss Mary Sue Sadler (teacher), Lydia Thomas, Jean Carr, Wanda Sue Herren, Imogene Whitehead; front row left to right are Denford Henley, Richard Burgess, David Brown, and Tommy Roberts.

There are several cemeteries in Boma. Most notable are Smellage Cemetery on Hopewell Road, New Home Cemetery behind the New Home Baptist Church, Tighfit Cemetery on Tighfit Road, Richard Lee Cemetery on Lee

Cemetery Road, and Stewart Cemetery just east of Boma on Old Baxter Road.

The subject of cemeteries brings up an interesting topic of Boma heritage – our first crematorium. John Nichols, son of the renowned Methodist preacher, John Harmon Nichols, lived in Nashville. John Harmon’s nephew, also named John Nichols lived in Boma. On 8 April 1929 Martha, with of the Nashville John Nichols died. She had requested that she be cremated. John brought his wife’s body to Boma on the train where he and his cousin, John, proceeded to cremate the body somewhere on the farm of Boma’s John Nichols. This event gathered some attention. The “authorities” became involved to see if any wrong-doing had taken place. No charges were filed. As far as we know, the ashes remain somewhere buried or scattered on the 1929 farm of John Nichols.

Downtown Boma is placed at the intersection of Old Baxter Road and Tighfit Road. This is where the train stop, post office, and several general stores operate. Residents receive mail from the Baxter post office since the Boma post office closed on 28 February 1959.

Story submitter by: Neal Fisher, 11165 Old Baxter Road, Baxter, TN 38544; compiled by: Tommy A. Roberts, 9575 Roberts Road, Silver Point, TN 38582.

BOMA FIRST CHURCH OF GOD (#56)

Source: Heritage of Putnam County Tennessee – 2008 by Putnam County Heritage Book Committee and County Heritage Inc.

Pg. 18 – Previous to the actual beginning of the church, Bro. James T. Hooten had conducted a singing school in the Anderson Store House; in the winter of 1938-39 the church began meeting in the Carson Store House (later known as the Dow Maxwell store). Soon the store building was rented, and the church was asked to move. The congregation then moved into the Ray Jared Store House, which was then located on the property where our present church is. However, our church did not worship there very long until it was asked to move again. With no place to go, a meeting was called at Sister Wade Butler’s. They decided to cut logs and get the lumber to build the building of the “old Church” building. This building was constructed under the pastoral ministry of Rev. Willie Gentry. The Church continued to worship in the “old church” building until 1963. Under the leadership of Rev. Clyde Cunningham, the first building was constructed on this present site. In 1977, under the leadership of Rev. Cunningham, the present parsonage was built and paid for. Some former pastors are: James T. Hooten, Otto Winton, Jessie Guest, Willie Gentry, Bradie Reed, Earl Rigsby, Bernidine King, Clyde Cunningham, J. G. York, Dave Kelso, Carl Wilson, Jim Holifield, and Rich Tiner. Our present pastor is Rev. Tim Sharp. Interim pastors are John V. Gentry, Jr., Archie Whitefield, and Mike Pack. *Story by: Jeannie Cunningham Lee.*

New Home Cemetery (once called Boma Cemetery), Boma, Putnam Co., TN

*Jacob Mattison Stewart, b. 11 November 1847, Putnam Co., TN – d. 25 January 1920
md 10 September 1868

*Mary E. (Lee) Stewart, b. 21 July 1849

(Jacob Mattison Stewart, s/o Harrison Stewart & Sarah Brown. Jacob had a brother named Henry Riley Stewart who md Bettie (Medlin) Stewart).

*Jasper Davis Lowe, b. 17 November 1861, Putnam Co., TN – d. 19 December 1950, Putnam Co., TN

*Margaret Ellen (Conway) Lowe, b. 30 July 1861, Putnam Co., TN – d. 28 December 1939, Putnam Co., TN

(Jasper Davis Lowe was the s/o I. Alfred Lowe and Mary Clark. Margaret Ellen (Conway) Lowe was the d/o Pleasant M. Conway & Sarah Lucinda Gentry).

Smellage Cemetery, Boma, Putnam Co., TN

* Franklin Pierce Fisher, b. 23 October 1852, TN – d. 3 April 1918, Putnam Co., TN

*Frances “Fannie” (Maxwell) Fisher – no dates on tombstone

(Franklin Pierce Fisher md 2nd Margaret Elizabeth (Lowe) Kinniard. Franklin Pierce Fisher was the s/o Cornelius Neil Fisher).

*John Washington Barks, b. 15 March 1865, TN – d. 12 August 1932, Putnam Co., TN

*Lula B. (Butler) Barks, b. 11 June 1873, TN – d. 22 June 1901

(John Washington Barks md 2nd Ida E. Butler. John Washington Barks was the s/o Thomas J. Barks & Locinda Cole).

<http://www.ajlambert.com>